

Landing gears · Modul CD

Advantages at a glance

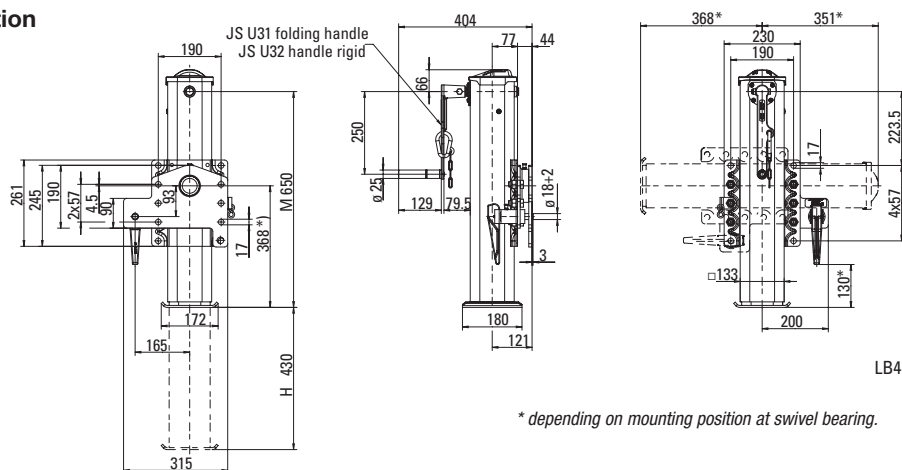
- Swivelling model
- For all centre-axle trailers, both for road traffic and agricultural use
- Added ground clearance thanks to swivel bearing
- Maximum lift combined with low mounting height

Technical Features

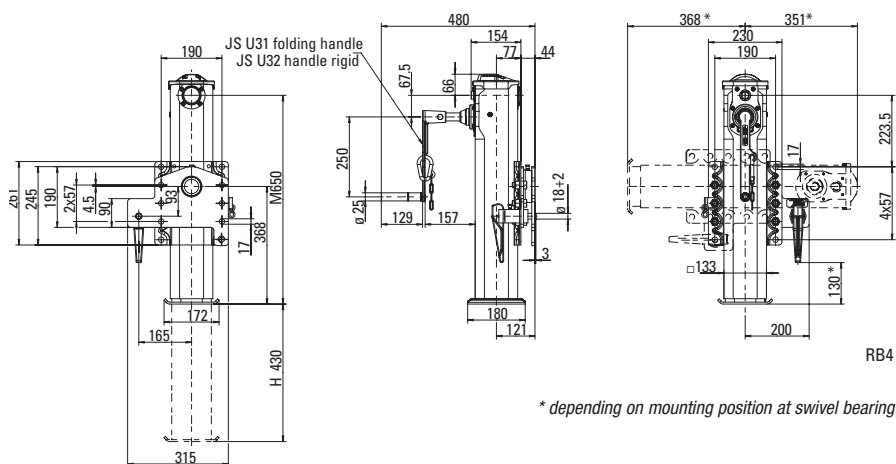
- Individual leg
- Rigid sand shoe
- The legs can be welded or bolted on.

Technical Specification

1-gear-leg



2-gear-leg



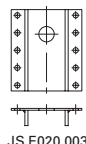
Selection table / Versions available (Swivelling mode)

Order No.	Description	M (mm)	H (mm)	Static test load (t)	Lifting capacity (t)	Crank force at x t Lifting capacity (N)
CD1062700LB4	1-speed-leg with swivel bearing	650	430	5	2	210
CD1062700RB4	2-speed-leg with swivel bearing	650	430	5	5	100

Pivot bearing JS E010.013, with bolt kit JS E020.005 included loose.

Accessories

Order No.	Description
JS E010.013	Swivel bearing
JS E020.005	Bolt kit (12 bolts and nuts)
JS E020.003	Back plate
JS U31	Tandem crank handle, folding
JS U32	Tandem crank handle, rigid

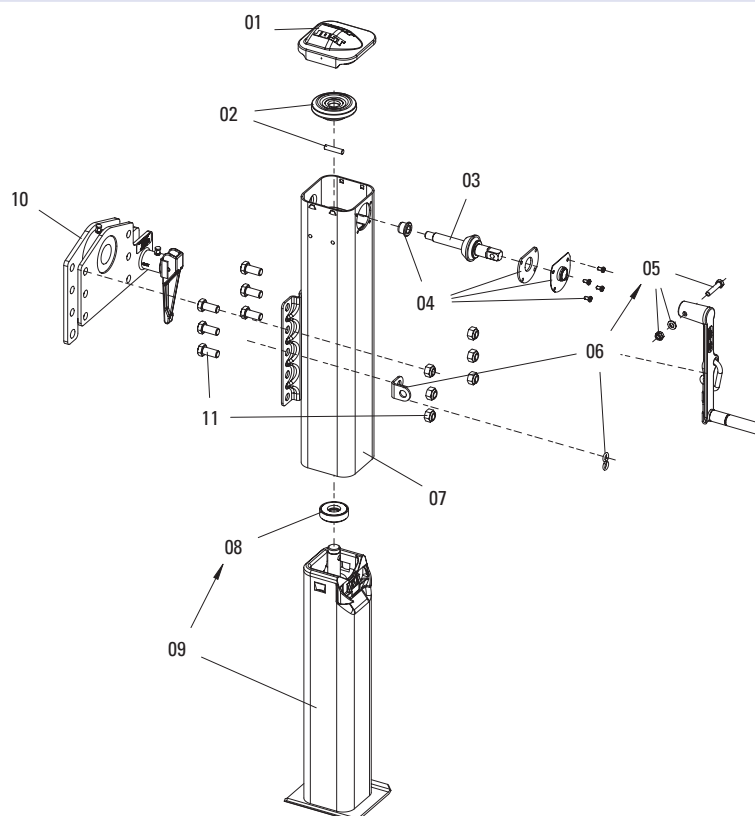


Technical Data (per piece)

Characteristic	Value
Lift per turn of handle 2-gear-leg	
- Low gear	0,9 mm
- High gear	15,0 mm
Lift per turn of handle 1-gear-leg	4,6 mm

Drawbar jack CD1062700L/LB4

Spare parts

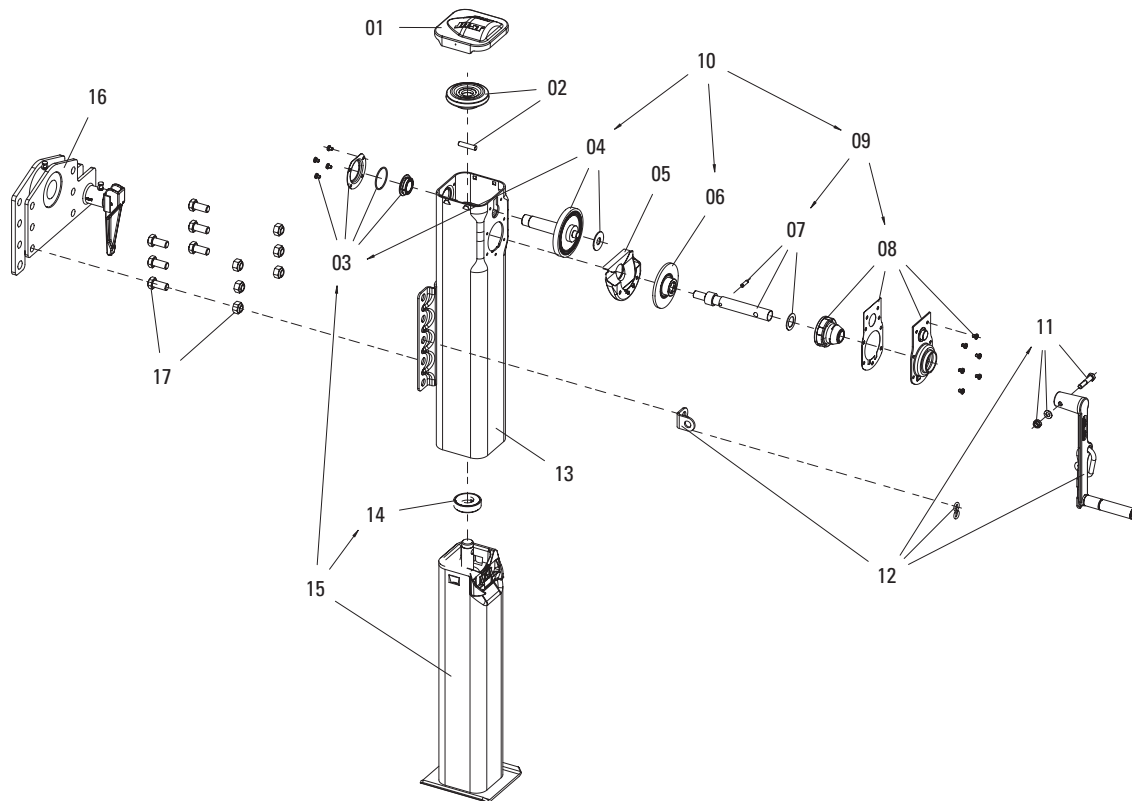


Item	Description	Remark	Order No.	per piece
01	Cover with bolts		JS E0046100	1
02	Bevel gear with bolt		JS E0058600	1
03	Shaft		JS E0001501	1
04	Bearing	compl.	JS E0046200	1
05	Bolts with washers and nuts		JS E0043101	1
06	Crank	compl., with 05	JS U31 or JS U32	1
07	Shaft		JS E0104501	1
08	Axial bearing		JS E0066401	1
09	Inner tube with spindle and bearing	with 08	JS E1092602	1
10	Swivel bearing	for CD1062700LB4	JS E010.013	1
11	Bolt kit	for CD1062700LB4	JS E020.005	1



Drawbar jack CD1062700R/RB4

Spare parts



Item	Description	Remark	Order No.	per piece
01	Cover with bolts		JS E0046100	1
02	Bevel gear with bolt		JS E0058600	1
03	Cover compl. with bearing		JS E0083900	1
04	Shaft with bearing		JS E0084100	1
05	Grease tank		JS E0002000	1
06	Gear		JS E0055800	1
07	Crank shaft	compl.	JS E0046500	1
08	Bearing holder	compl.	JS E0058800	1
09	Crank shaft and bearing holder	with 07 + 08	JS E0056600	1
10	Drive	compl., with 04 , 06 + 09	JS E0084300	1
11	Bolts with washers and nuts		JS E0043101	1
12	Crank handle with spring hooks	with 11	JS U31 folding JS U32 rigid	1
13	Shaft	with 19	JS E0104401	1
14	Axial bearing		JS E0066401	1
15	Inner tube with Spindle	with 14 + 03	JS E1086301	1
16	Pivot bearing	for CD1062700RB4	JS E010.013	1
17	Bolt kit	for CD1062700RB4	JS E020.005	1